

Phytochemical Screening of Aqueous, Ethanolic and Methanolic Extracts of *Morus mesozygia* Linn. Stapf., Leaves

Marcella Tari Joshua^{1*}, Edna O. Wachuku¹, N. Boisa² and Nsirim Nduka¹

¹Department of Medical Laboratory Science, Rivers State University, Port Harcourt, Nigeria.

²Department of Chemistry, Rivers State University, Port Harcourt, Nigeria.

Authors' contributions

This work was carried out in collaboration among all authors. Authors NN, EOW and NB designed the study, wrote the protocol. Author MTJ wrote the draft of the manuscript, managed the analyses and the literature searches. All authors read and approved the final manuscript.

Article Information

DOI: 10.9734/AJBGMB/2020/v5i130119

Editor(s):

(1) Dr. Ahmed Medhat Mohamed Al-Naggar, Cairo University, Egypt.

Reviewers:

(1) Lokadi Pierre Luhata, Universite Loyola Du Congo, The Democratic Republic of Congo.

(2) A. Vijaya Anand, Bharathiar University, India.

(3) Madhulika Bhagat, University of Jammu, India.

Complete Peer review History: <http://www.sdiarticle4.com/review-history/60688>

Original Research Article

Received 20 June 2020
Accepted 27 August 2020
Published 03 September 2020

ABSTRACT

Aim: This study focused on the phytochemical screening of aqueous, ethanolic and methanolic leaf extracts on the species *Morus mesozygia* linn.

Study Design: This study was a cross-sectional study.

Place and Duration of Study: This study was carried out at the Plant Anatomy and Physiology Research Laboratory, University of Port Harcourt, between July, 2018 and November, 2018.

Methodology: *Morus mesozygia* linn leaves were collected and washed with distilled water, air dried for seven days and milled into fine powder. Maceration method was used to extract the powdered leaf into a brownish paste using three different solvents; distilled water, ethanol and methanol. The different plant extracts were subjected to qualitative phytochemical screening for alkaloids, flavonoids, saponins, carbohydrates, tannins and anthraquinones. Quantitative phytochemical analysis was done using a Gas chromatography – Mass Spectroscopy machine.

Results: Results showed that the powdered *Morus mesozygia* linn leaves contained alkaloids, flavonoids, saponins, carbohydrates, tannins, but not anthraquinones. The methanolic and aqueous leaf extracts contained high amounts of alkaloids, flavonoids, saponins, carbohydrates and tannins,

*Corresponding author: E-mail: marcella.joshua4@yahoo.com;

while the ethanolic extract also contained high amounts of the aforementioned phytochemicals in the same proportion, but had saponins in moderate amounts. The result of the GC-MS analysis showed that the three extracts contained complex compounds in varying amounts.

Conclusion: Phytochemical screening test of *Morus mesozygia* has revealed the presence of the substances like alkaloids, saponins, flavonoids, oils, phenolic compounds, tannins and some complex compounds discovered using GC-MS technique.

Keywords: Phytochemical screening; aqueous; ethanolic; methanolic; *Morus mesozygia* linn. stapf.; leaves.

1. INTRODUCTION

Plants parts such as; fruits, seed, bark, leaves, and so on, have been used to cure many diseases since ancient time because they are known to contain certain bioactive compounds called phytochemicals. Today in this modern world, even though synthetic drugs are readily available and highly effective in curing various diseases, there are people who still prefer using traditional folk medicines because of their less harmful effects. There is a wide diversity of these compounds, especially secondary metabolites, found and isolated from plants. Several studies have shown that these compounds have anticancer, antibacterial, analgesic, anti-inflammatory, antitumor, antiviral and many other activities to a greater or lesser extent [1,2]. Typical examples of these phytochemical compounds include flavonoids, phenols and phenolic glycosides, saponins and cyanogenic glycosides, stilbenes, tannins, nitrogen compounds (alkaloids, amines, betalains), terpenoids and some other endogenous metabolites [1,3].

The African mulberry (*Morus mesozygia* Linn. Stapf.), an herb, is also an African species of the *Morus* genus plant amongst its temperate species such as *Morus alba* has been reported by the western Yoruba tribes of the Nigerian people to have medicinal value that include treatments of ulcer, venereal diseases as well as certain stomach pains. This study focused on the phytochemical screening of aqueous, ethanolic and methanolic leaf extracts of the species *Morus mesozygia* linn. Stapf.

2. MATERIALS AND METHODS

2.1 Plant Collection and Authentication

Morus mesozygia Linn. (family Moraceae) fresh leaves samples were collected in the month of July, 2018 from an abandoned, fallow- farmland at Ile-Ife, Ilesha Road, Ile-Ife, Osun State, South-Western Nigeria and was authenticated by plant

botanist, Dr. Oladele A.T. at the Department of Forestry and Wildlife Management, University of Port Harcourt with the herbarium voucher number (UPFH 0125) and was submitted at the department's herbarium.

2.1.1 Preparation of plant extract (cold maceration extraction method)

The *Morus mesozygia* linn leaves were washed with distilled water and air dried separately for seven days and milled into fine powder with the use of a milling machine, the powdered leaves produced a total weight of 2.90 kg, it was stored and labelled into an air tight container prior to use.

2.1.1.1 Extraction of powdered *Morus mesozygia* linn leaves using distilled water, absolute ethanol and methanol

Nine hundred and sixty grams (960 g) of dried powdered *Morus mesozygia* linn leaves was put into a clean beaker, five liters (5 L) of distilled water, ethanol and methanol separately and were suspended into the beaker, they were shaken severally on a shaker, they were mixed properly and stored for 24 hours. They were macerated and filtered through a muslin cloth and again filtered out through a Whatman's number one filter paper. The filtered extracts were concentrated (on low pressure) using the rotary evaporator equipment [4] after which they were dried on an evaporating dish at a temperature of 50°C to 60°C to a semi- solid form. A sticky semi-solid dark brownish substance was obtained. The extracts were stored in a well corked universal bottle. The leaf extracts were kept in a 4°C refrigerator prior to phytochemical screening.

2.2 Phytochemical Qualitative and Quantitative Analysis of *Morus mesozygia* Linn. Stapf Leaf

Phytochemical analysis was carried out at the Plant Anatomy and Physiology Research Laboratory, University of Port Harcourt.

2.2.1 Phytochemical qualitative analysis of flavonoids [5]

Into a clean test tube was 5 ml of the methanolic, ethanolic and aqueous extracts *Morus mesozygia linn Staph.* leaves separately pipetted with the further addition of 5 ml of 10% of dilute ammonia solution into each tube. To the test sample, was the careful addition of 1ml of concentrated sulphuric acid., a yellowish coloration of the solution was observed which indicated the presence of flavonoid in the test sample.

To indicate the presence of the severity of flavonoids, the below symbols were used:

- + → Mildly present
- ++ → Moderately present
- +++ → Highly present

2.2.2 Phytochemical qualitative analysis of alkaloids using wagner's reagent [5]

5 ml of the three leaves extracts were pipetted into three dry clean test tubes. 3 mls in drops of Wagner's reagent was introduced into each test tube. Homogeneity of the mixture was ensured as the test tubes were shaken thoroughly. A precipitate of the mixture was observed which indicated the presence of alkaloids. The severity of alkaloids was represented as described below:

- + → Mildly present
- ++ → Moderately present
- +++ → Highly present

2.2.3 Phytochemical qualitative analysis of tannins using folin-denis's reagent [6]

1 ml each of the three leaf extracts was pipetted into three clean test tubes. Into the test sample in the test tubes was a drop of sodium carbonate solution added, likewise was two drops of Folin's Denis reagents added into the mixtures. The mixture in the test tubes were kept on standing for ten minutes for total colour development. A bluish colour of the mixtures indicated the presence of tannis. The severity of the presence of tannis was indicated with the symbol as shown below:

- + → Mildly present
- ++ → Moderately present
- +++ → Highly present

2.2.4 Phytochemical qualitative analysis of saponins using frothing's test [6]

5 mls each of the three leaf extracts was boiled in 20 mls of distilled water in a water bath, after which it was then filtered. 10 ml of the filtered was mixed with 5 ml distilled water, shaken vigorously for the appearance of a stable persistent froth. The froth formed was mixed with 3 drops of olive oil for each tube, which was again shaken vigorously for uniformity and the three tubes were observed for the formation of an emulsion. The concentration of the emulsion formed to show the presence of saponins was recorded with its severity as:

- + → Mildly present
- ++ → Moderately present
- +++ → Highly present

2.3 Phytochemical Quantitative Analysis of Alkaloids

2.3.1 Phytochemical quantitative analysis of alkaloids [7]

5 g each of the aqueous, ethanolic and methanolic leaf extracts of the sample was weighed and dispensed into three different 250 ml beaker, to which 200 mls of 10% acetic acetic in ethanol was added to each tube. The mixture was covered and allowed to stand for 4 hours after which the filtrate that was filtered through a Whatman's number 541 filter paper was concentrated on a water bath. To a one quarter of each of the leaf extract sample of the original volume collected was the addition of concentrated ammonium hydroxide which was added in a drop wise volume to the filtrate which showed a complete precipitation process. The entire mixture of the solution was left on standing to settle while the precipitate formed was washed with ammonium hydroxide and again filtered. The residue on the filter paper was dried and weighed and calculated thus:

$$\text{Weight of Alkaloid} = \text{Weight of filter paper} + \text{residue} - \text{Weight of empty filter paper}$$

$$\text{Therefore, percentage yield of Alkaloid,} = \frac{\text{weight of filter paper} + \text{residue} - \text{weight of empty filter paper}}{\text{Weight of sample}} \times 100$$

2.3.2 Phytochemical quantitative analysis of flavonoids [8]

10 g each of the three leaf extracts was extracted repeatedly with 100 ml of 80%

aqueous methanol at room temperature. The complete portion of this mixture was filtered through a Whatman's number 42 filter paper. The filtrates obtained were then transferred into three crucibles and then subjected to a water bath for them to evaporate into dryness and further air dried in an air oven, cooled to room temperature in a desiccator and weighed in an analytical balance.

The calculation used to obtain the quantified flavonoid included:

$$\text{Weight of Flavonoids} = \text{Weight of Beaker} \times \text{residue} - \text{weight of empty beaker}$$

$$\% \text{ flavonoids} = \frac{\text{weight of flavonoid} \times 100}{\text{Weight of sample}} \quad 1$$

2.3.3 Phytochemical quantitative analysis of saponins [7]

10 g each of the three different leaf extracts was weighed and transferred into three different 250 ml conical flask. 20% in 100mls each of aqueous ethanol solution was added to the samples. The samples were subjected to heat on a water bath with series of stirring on a temperature maintained at 55°C for 4 hours. The mixtures were then filtered while the residues were re-extracted with 20% of a 200 ml in portion of ethanol. The combined extracts were evaporated to 40 ml over a temperature of 90°C over a water bath. The aqueous layer that was recovered during the process was kept while the ether layer was discarded. The recovered aqueous layer was purified with 60 ml n-butanol. The combined n-butanol extracts were washed twice with 10 ml of 55% aqueous solution of sodium chloride. The left-over solution was heated in a water bath and further left to air dry in an evaporator where its weight was obtained with the use of this formula:

$$\text{Weight of Saponin} = \text{weight of flask} \times \text{residue} - \text{weight of empty flask}$$

Table 1. Summary of the preliminary phytochemical analysis of *Morus mesozygia* Linn. Stapf. leaves powdered samples

Compound Classes	Test	Observation	Inference
Alkaloids	Wagner's Reagent	Reddish brown color	+
Flavonoids	Shinoda's test	yellowish color	+
Carbohydrates	Fehling's test	Brick Red colour	+
Saponins	Frothing test	Frothing head formed	+
Tannins	Folin-Denis's reagent	Bluish colour	+
Anthraquinones		No colouration	-

Key: Absent (-), Present (+)

$$\% \text{ Saponin} = \frac{\text{weight of saponin residue} \times 100}{\text{Weight of sample}} \quad 1$$

2.3.4 Phytochemical quantitative analysis of tannins [9]

0.1 g each of the three leaf extracts was weighed on a weighing scale and transferred into three 250 ml conical flasks. 100 ml of distilled water was added into the samples and boiled for 1 hour. The samples were allowed to cool at room temperature and diluted with 50 ml of distilled water. 1ml each of the diluent was pipetted into three test tubes and 2 to 5 mls of Folin-Denis's reagent was added with 1 ml of 17% sodium carbonate.

A blank test was prepared with 1 ml distilled water and the reagents as earlier stated. The bluish colour formed in the test sample was read spectrophotometrically at 750 nm wavelength using blank to calibrate the spectrophotometer.

0.1 g of the tannic acid was dissolved into 100 ml dissolved water to prepare the standard concentration to enable the dilutions of the working standards of choice to be plotted against the concentration.

A linear graph that passed through the margin was obtained. The concentrations of tannin in the three samples were extrapolated from the standard graph.

3. RESULTS AND DISCUSSION

The phytochemical screening of aqueous, ethanolic and methanolic extracts of *Morus mesozygia* Linn. S. leaf revealed the presence of some secondary metabolites such as alkaloids, steroids tannins and so on. Qualitative phytochemical analysis of *Morus mesozygia* Linn. Stapf. leaf powdered samples showed that the leaf extract contains alkaloids, flavonoids, carbohydrates, saponins and tannins, (Table 1).

In a previous study by [10], the phytochemical profile of several species of several *Morus* species showed that the dry powdered leaf extract of members of the genus *Morus* are rich in alkaloids, flavonoids and polyphenols. Carbohydrates detected in the powdered leaf extract, were missing in the methanolic leaf extract, but all the other phytochemicals were present, but in high quantities (Table 2).

The result also showed that the ethanolic leaf extract of the plant contained alkaloids, flavonoids, tannins in high quantities, while saponins were present in moderate amount, (Table 3).

The aqueous extract of *Morus mesozygia* Linn. Stapf. was also found to contain alkaloids, flavonoids, saponins and tannins in high amounts, (Table 4).

The phytochemical compounds detected are known to have medicinal importance. Different phytochemical components have been linked with various bioactive or medicinal role they play, especially in the management of certain disease conditions, [11].

For example, alkaloids have been reported as powerful poison and many alkaloids and flavonoids derived from medicinal plants show biological activities like, anti-inflammatory [11], antimalarial [12] antimicrobial [13], cytotoxicity, antispasmodic and pharmacological effects [14] and antiproliferative potentials [15]. The results also showed that the phenolic content of the plant contained alkaloids, flavonoids, tannins, saponins and CHO in different quantities, (Table 6).

The GC-MS analysis of this study demonstrated differences in chemical components of the aqueous, methanolic and ethanolic solvent extract types of the leaves of *MMLS*.

Table 2. Summary of the qualitative phytochemical analysis of *Morus mesozygia* Linn. Stapf. methanolic leaves extracts

Compound Classes	Test	Observation	Inference
Alkaloids	Wagner's Reagent	Reddish brown color	+++
Flavonoids	Shinoda's test	yellowish color	+++
Saponins	Frothing test	Frothing head formed	+++
Tannins	Folin-Denis's reagent	Bluish colour	+++
Anthraquinones		No colouration	-

Key: (+) → Mildly Present; (++) → Moderately Present; (+++) → Highly Present; (-) → Absent

Table 3. Summary of the qualitative phytochemical analysis of *Morus mesozygia* Linn. Stapf. ethanolic leaves extracts

Compound Classes	Test	Observation	Inference
Alkaloids	Wagner's Reagent	Reddish brown color	+++
Flavonoids	Shinoda's test	yellowish color	+++
Saponins	Frothing test	Frothing head formed	++
Tannins	Folin-Denis's reagent	Bluish colour	+++
Anthraquinones		No colouration	-

Key: (+) → Mildly Present; (++) → Moderately Present; (+++) → Highly Present; (-) → Absent

Table 4. Summary of the qualitative phytochemical analysis of *Morus mesozygia* Linn. Stapf. aqueous leaves extracts

Compound Classes	Test	Observation	Inference
Alkaloids	Wagner's Reagent	Reddish brown color	+++
Flavonoids	Shinoda's test	yellowish color	+++
Saponins	Frothing test	Frothing head formed	+++
Tannins	Folin-Denis's reagent	Bluish colour	+++
Anthraquinones		No colouration	-

Key: (+) → Mildly Present; (++) → Moderately Present; (+++) → Highly Present; (-) → Absent

Table 5. Summary of the qualitative phytochemical analysis of carbohydrates in *Morus mesozygia* Linn. Stapf. methanolic, ethanolic, aqueous leaves extracts

Carbohydrates in Sample	Test	Observation	Inference
Aqueous leaves	Fehling's test	Reddish brown color	++
Ethanolic leaves	Fehling's test		+++
Methanolic leaves	Fehling's test		+

Key: (+) → Mildly Present; (++) → Moderately Present; (+++) → Highly Present; (-) → Absent

Table 6. Phenolic content of dried powdered samples of *Morus mesozygia* Linn. Stapf., (African Mulberry) leaves

S/N	Sample Identity	Alkaloids (%)	Flavonoids (%)	Tannin (%)	Saponin (%)	CHO %
1.	Dried powdered Leaf	2.72	2.80	2.36	16.3	22.00



Fig. 1. Graph of gas chromatography-mass spectrometry analysis of aqueous leaf extracts of *Morus mesozygia* Linn.S

The results revealed 'Twenty-two (22) chemical components from the Methanolic leaf extracts having the highest numbers of chemical components from which the top five with the highest percentage of components identified included: 4-Methyl-1-3-(3-Nitrophenyl)- 6-Phenyl (24.8%), 3(2H)-Pyridazinone-6-Methyl (11.45%), 3,7,11,15-Tetramethyl-2-Hexadecen-1-ol also known as Phytol (9.1%), 9,12,15-Octadecatrienoic

acid (8.6%) (Tables 8 & 9 and Figs. 2 and 3).

Followed by Ethanolic leaf extract with Eighteen (18) components in which four with the highest percentage components included: 3,7,11,15-Tetramethyl-2-hexadecen-1-ol also called phytol (41.61%), 9,12,15-Octadecatrienal (13.4%), Squalene (8.35%), Trans-Farnesol (3.39%) (Table 8) then the Aqueous extract with Six (6)

components which included: 1,6,10,14-Hexadecatetraen-3-ol (32.21%), 2,3-Butanediol (12.15%), propanoic acid (21.50%), Phytol (21.33%) (Table 7).

Table 7. Gas chromatography-mass spectrometry analysis of aqueous leaf extracts of *Morus mesozygia* Linn.S. (African Mulberry)

RT	Component	Formula	MW	%
36.729	1,6,10,14-Hexadecatetraen-3-ol	C ₂₀ H ₃₄ O	290.48	32.24
3.593	2,3-Butanediol	C ₄ H ₁₀ O	90.12	21.331
3.442	Propanoic acid	C ₃ H ₆ O ₂	215.1	21.150
7.175	Phytol	C ₂₀ H ₄₀ O	296	12.511

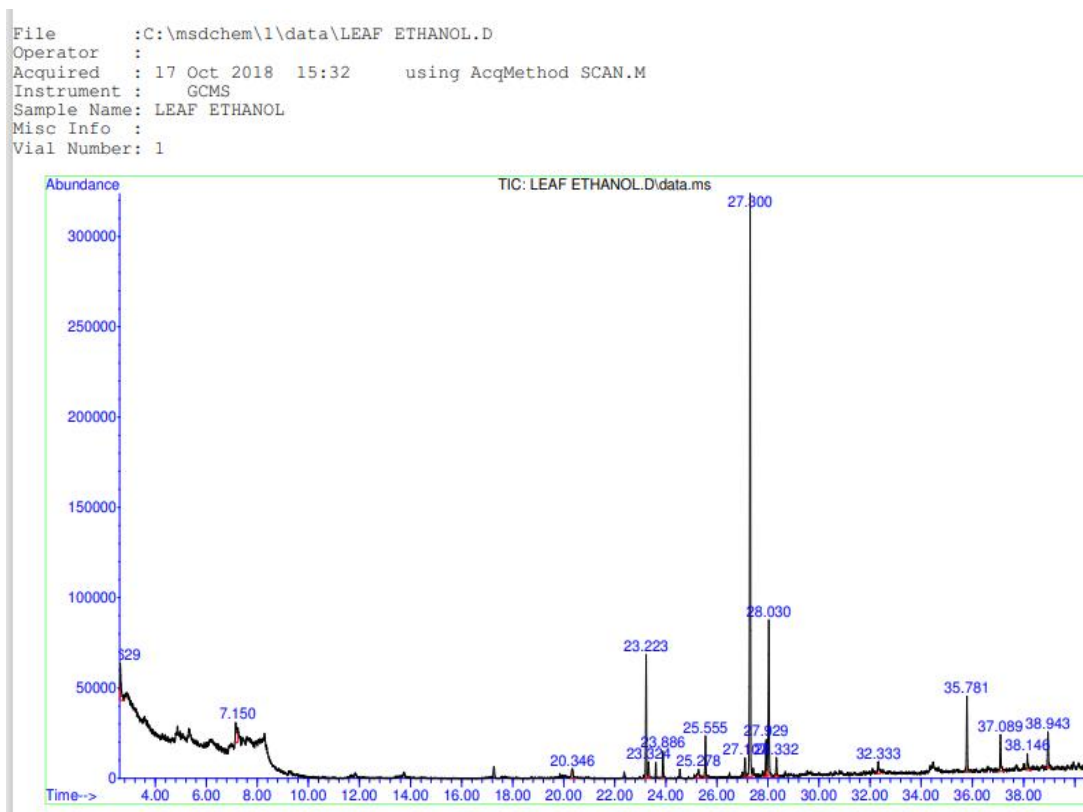


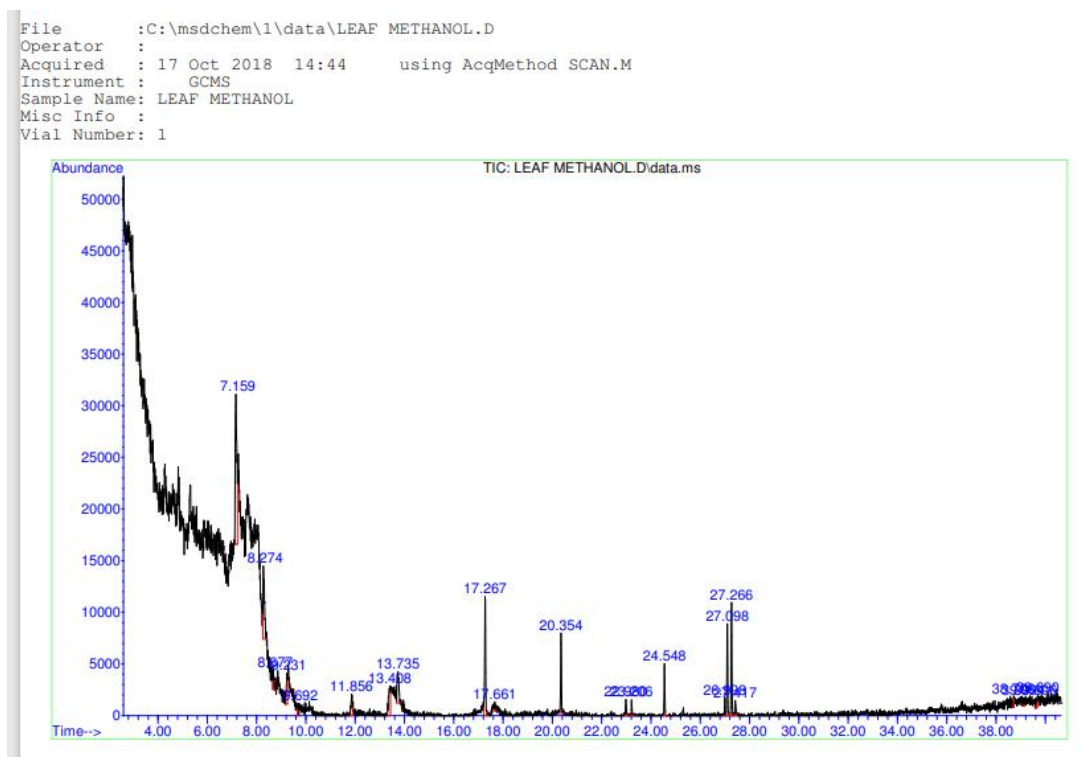
Fig. 2. Graph of gas chromatography-mass spectrometry analysis of ethanol leaf extracts of *Morus mesozygia* Linn.S

Table 8. Gas chromatography-mass spectrometry analysis of ethanolic leaf extracts of *Morus mesozygia* Linn. S. (African Mulberry)

RT	Component	Formula	MW	%
27.107	3,7,11,15-Tetramethyl-2-hexadecen-1-ol	C ₂₀ H ₄₀ O	296.5	41.613
28.030	9,12,15- Octadecatrienal	C ₁₈ H ₃₀ O	262.4	13.404
23.346	Neophytadiene	C ₂₀ H ₃₈	278.5	8.253
35.781	Squalene	C ₃₀ H ₅₀	410.7	5.456
37.089	Trans-Farnesol	C ₁₅ H ₂₆ O	222.37	3.394

Table 9. Gas chromatography-mass spectrometry analysis of methanolic leaf extracts of *Morus mesozygia* Linn. S. (African Mulberry)

RT	Component	Formula	MW	%
7.159	4-Methyl-3-(3-nitrophenyl)-6-phenyl-5,6-dihydro-4H-(1,2,4,5)	C ₁₅ H ₁₄ N ₄ O ₃	298	24.800
17.267	3(2H)-Pyridazinone,6-Methyl	C ₅ H ₆ N ₂ O	110.11	11.454
8.274	Methoxyacetic acid	C ₁₁ H ₂₂ O ₃	202.29	9.125
27.26	3,7,11,15-Tetramethyl-2-hexadecen-1-ol	C ₂₀ H ₄₀ O	296.53	8.622
27.098	9,12,15-Octadecatrienoic acid, methyl ester	C ₁₉ H ₃₂ O ₂	292.46	7.439

**Fig. 3. Graph of gas chromatography-mass spectrometry analysis of methanol leaf extracts of *Morus mesozygia* Linn.S****Table 10. Summary of the quantitative phytochemical analysis of *Morus mesozygia* Linn. Stapf., in methanolic, ethanolic, aqueous leaves and methanolic, ethanolic, aqueous extracts**

S/N	Sample Identity	Alkaloids (%)	Flavonoids (%)	Tannins (%)	Saponin (%)
1.	Aqueous Leaves Extract	1.21	12.71	4.84	24.70
2.	Ethanolic Leaves extract	2.69	25.83	9.29	51.71
3.	Methanolic Leaves Extract	6.05	21.72	4.51	23.90

4. CONCLUSION

Phytochemical screening test of *Morus mesozygia* has revealed the presence of the substances like alkaloids, saponins, flavonoids, oils, phenolic compounds, tannins and some complex compounds discovered

using GC-MS technique. Phytochemical compounds found in leaf extracts of the plant indicates its potential as an important source of medicine and also to improve the health of its users as a result of the presence of various compounds that are vital for good health.

ACKNOWLEDGEMENTS

The authors are grateful to Prince Romeo Alaowei Joshua for his utmost support in the funding of the research and Staff of Plant Anatomy and Physiology Research Laboratory, University of Port Harcourt, for their efforts in the phytochemical analysis.

COMPETING INTERESTS

Authors have declared that no competing interests exist.

REFERENCES

1. Cai YZ, Luo Q, Sun M, Corke, H. Antioxidant activity and phenolic compounds of 112 traditional Chinese medicinal plants associated with anticancer. *Life Science*. 2004;74:2157–84.
2. Miliauskas G, Venskutonis PR, Beek TA. Screening of radical scavenging activity of some medicinal and aromatic plant extracts. *Food Chemistry*. 2004;85:231–37.
3. Abdelwahab SI, Abdul AB, Elhassan MM, Mohan S, Mariod AA. Phenolic content and antioxidant activities of *Goniothalamus umbrosus* extracts. *International Journal of Natural Products and Pharmaceutical Science*. 2010;1:1–6.
4. Gulcin M. The antioxidant and radical scavenging activities of black pepper (*Piper nigrum*) Seeds. *International Journal of Food and Science Nutrition*. 2005;56: 401-9.
5. Kokate CK, Khandelwal KR, Pawar AP, Gokhale SP. *Practical Pharmacognosy*, Nirali Prakashan, Pune International Journal. 2000;1:45-6.
6. Nahapetian A, Bassiri A. Changes in concentration and interrelationship of phytate, P, Mg, Cu, Zn in wheat during maturation. *Journal of Agricultural and Food Chemistry*. 1974;32:1179-82
7. Harborne JB. *Phytochemical methods: A Guide to modern techniques of plant analysis*. Chapman and Hall Limited, London. 1973;279-85.
8. Bohm BA, Kocipai-Abyazan R. Flavonoids and condensed tannins from leaves of *Hawaiian vaccinium vaticulatum* and *V. alycinium*, *Pacific Science*. 1974;48:458-63
9. Folin O, Dennis W. Tyrosine in proteins as determined by a new colorimetric method. *Journal of Biology and Chemistry*. 1912;12: 245-51.
10. Song W, Wang H, Bucheli P, Zhang P, Wei D, Lu Y. Phytochemical profiles of different mulberry (*Morus* sp) species from China. *Journal of Agricultural and Food Chemistry*. 2009;57(19):9133-40.
11. Augusto LS, Josean FT, Marcelo S, Margareth FM, Petronio FA, Jose MB. Anti-inflammatory activity of alkaloids: an update from 2000 to 2010. *Molecules*. 2011;6:8515–34.
12. Dua VK, Gaurav V, Bikram S, Aswathy R, Upma B, Dau DA, Gupta NC, Sandeep K, Ayushi R. Anti-malarial property of steroidal alkaloid conessine isolated from the bark of *Holarrhena antidysenterica*. *Malaria Journal*. 2013;12:1–6.
13. Benbott A, Yahyia A, Belai'di A. Assessment of the antibacterial activity of crude alkaloids extracted from seeds and roots of the plant *Peganum harmala* L. *Journal of Natural Products and Plant Resources*. 2012;2:568–73.
14. Ameyaw Y, Duker-Eshun G. The alkaloid contents of the ethno-plant organs of three antimalarial medicinal plant species in the eastern region of Ghana. *International Journal of Chemical Science*. 2009;7:48–58.
15. Obisike UA, Boisa N. Nwachuku EO and Nduka N. Antiproliferative Potentials of *Zingiber officinale* in testosterone induced prostate hyperplastic albino wister rats. *International Research Journal of Oncology*. 2020;3(2):20-30.

© 2020 Joshua et al.; This is an Open Access article distributed under the terms of the Creative Commons Attribution License (<http://creativecommons.org/licenses/by/4.0>), which permits unrestricted use, distribution, and reproduction in any medium, provided the original work is properly cited.

Peer-review history:

The peer review history for this paper can be accessed here:
<http://www.sdiarticle4.com/review-history/60688>